



DRAGONS ARE THE WORST!

BY ALEX
WILLAN



ACTIVITY
BOOK

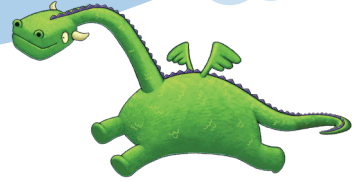
WHAT FEROCIOUS BEASTS!

Dragons come in all shapes, sizes, and colors!
Color in the dragons to make your dragon squad.



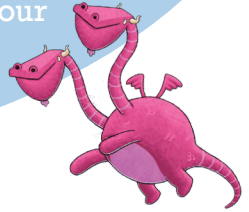
FEAR ME!

Draw your own ferocious dragon! What color is it?
What does it like? Make sure to draw it with some
of its favorite things!



GO ON A QUEST!

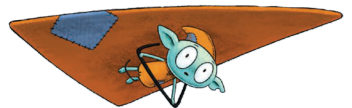
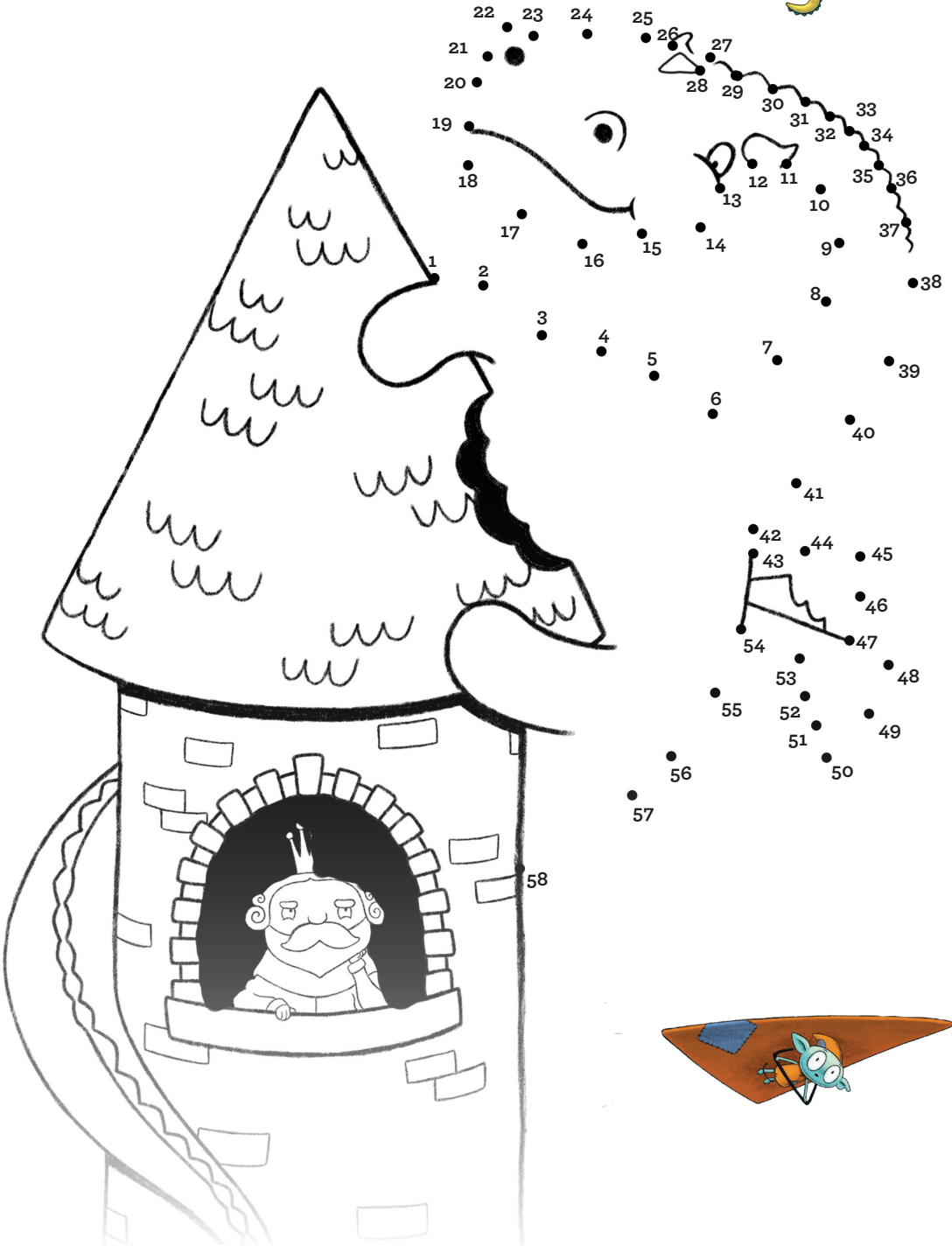
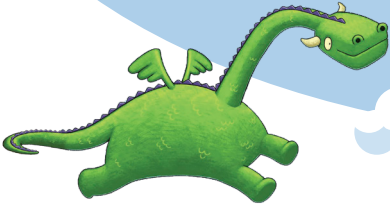
Dragons get to go on many epic and scary quests. Go on your own side quest and spot all of the differences.



ANSWER KEY: 1: eyelids on yellow dragon 2: pink stripes on snack stand 3: pink dragon doesn't have coins 4: extra sheep behind purple dragon 5: green dragon is missing a wing 6: goblin missing in background

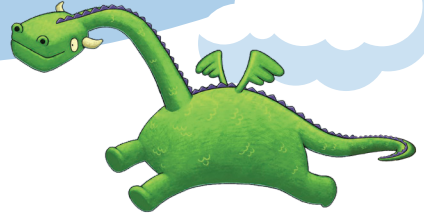
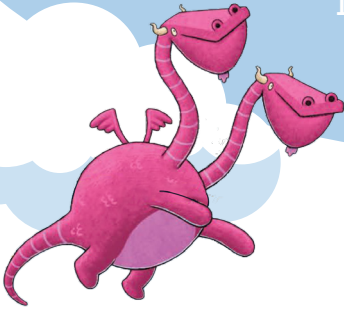
ATTACK ON THE CASTLE!

Connect the dots and help the king discover who or what is storming the tower.

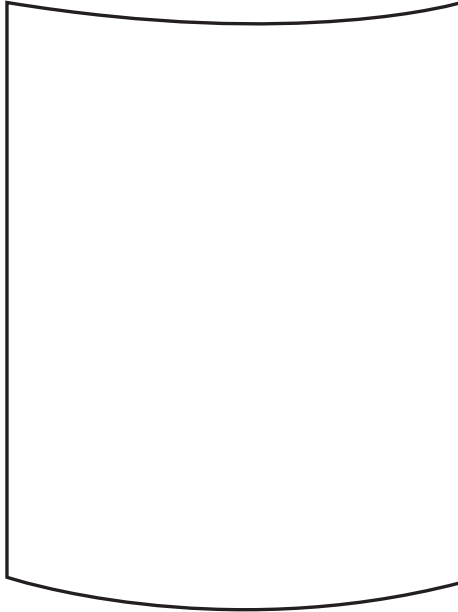


WARNING! BEWARE!

Draw yourself as a fearsome mythical creature!



WANTED!



WARNIN



IG!

ARNING!



MAYBE DRAGONS AREN'T THE WORST!

Gilbert the Goblin learns that dragons really aren't all that bad. What are some nice things you can say about others? Write something nice about a friend. Then, with an adult's help, cut-out the cards and give them away!

A square card with a light blue background and a dashed border. In the bottom-left corner, there is a small illustration of Gilbert the Goblin. A large white speech bubble is positioned above the character. Below the character, there are two lines of text: "TO: _____" and "FROM: _____".

TO: _____
FROM: _____

A square card with a light blue background and a dashed border. In the bottom-left corner, there is a small illustration of Gilbert the Goblin. A large white speech bubble is positioned above the character. Below the character, there are two lines of text: "TO: _____" and "FROM: _____".

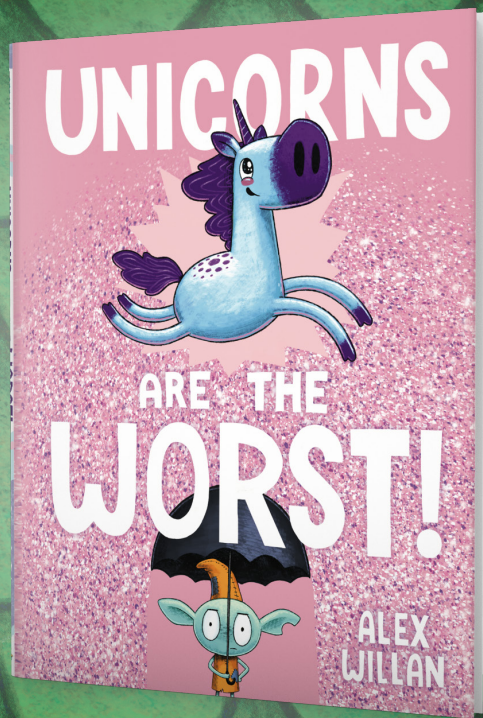
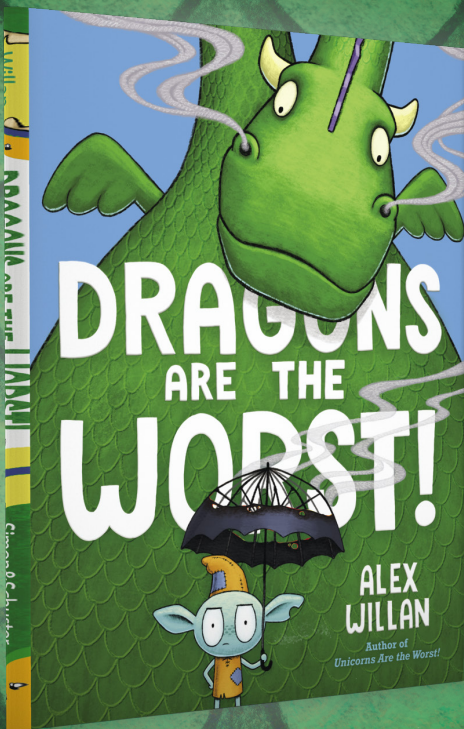
TO: _____
FROM: _____

A square card with a light blue background and a dashed border. In the bottom-left corner, there is a small illustration of Gilbert the Goblin. A large white speech bubble is positioned above the character. Below the character, there are two lines of text: "TO: _____" and "FROM: _____".

TO: _____
FROM: _____

A square card with a light blue background and a dashed border. In the bottom-left corner, there is a small illustration of Gilbert the Goblin. A large white speech bubble is positioned above the character. Below the character, there are two lines of text: "TO: _____" and "FROM: _____".

TO: _____
FROM: _____



ALEX WILLAN grew up in Louisville, Kentucky, where he was seldom seen without his sketchbook in hand. His love of drawing led him to earn a BFA in illustration from Savannah College of Art and Design. Alex has exhibited in art galleries and has painted murals, theater sets, and squirmy kids' faces, but his true love has always been children's books. He lives in Chicago with his dog, Harley. Visit him online at AlexWillan.com.